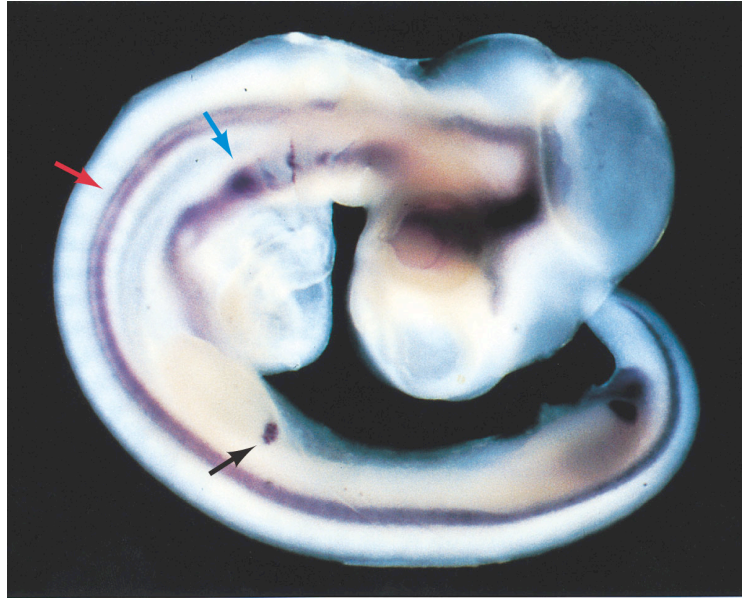
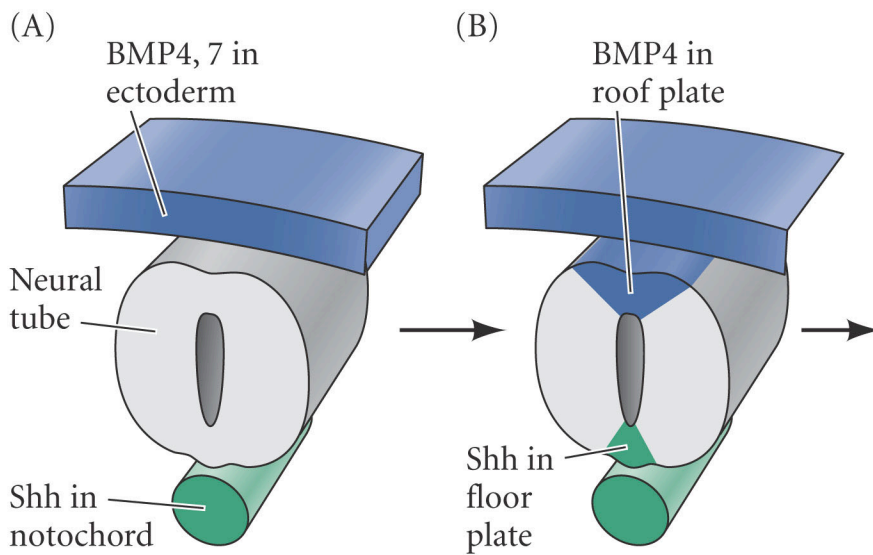


6.16 The sonic hedgehog gene is shown by in situ hybridization to be expressed in the chick nervous system (red arrow), gut (blue arrow), and limb bud (black arrow) of a 3-day chick embryo



DEVELOPMENTAL BIOLOGY, Eighth Edition, Figure 6.16 © 2006 Sinauer Associates, Inc.

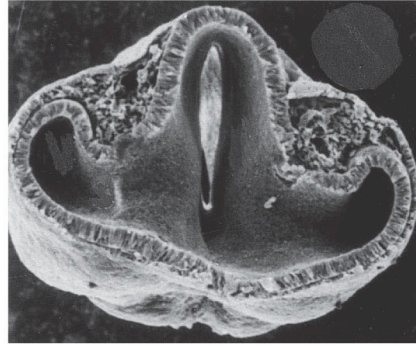
12.13 Dorsal-ventral specification of the neural tube (Part 1)



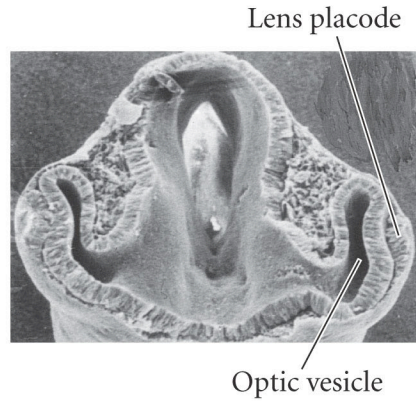
DEVELOPMENTAL BIOLOGY, Eighth Edition, Figure 12.13 (Part 1) © 2006 Sinauer Associates, Inc.

12.27 Development of the vertebrate eye (Part 1)

(A) 4-mm embryo



(B) 4.5-mm embryo



DEVELOPMENTAL BIOLOGY, Eighth Edition, Figure 12.27 (Part 1) © 2006 Sinauer Associates, Inc.

12.27 Development of the vertebrate eye (Part 2)

(C) 5-mm embryo

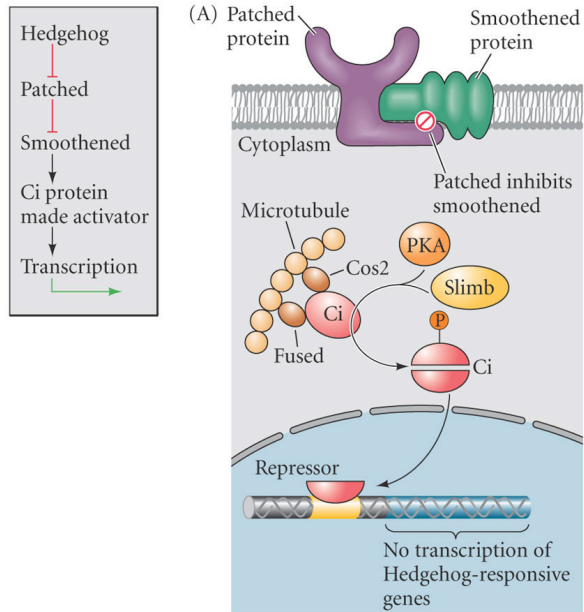


(D) 7-mm embryo



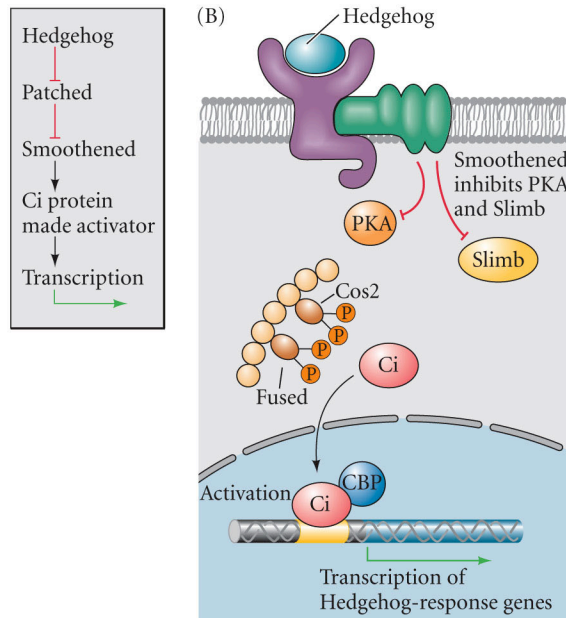
DEVELOPMENTAL BIOLOGY, Eighth Edition, Figure 12.27 (Part 2) © 2006 Sinauer Associates, Inc.

6.17 The Hedgehog signal transduction pathway (Part 1)



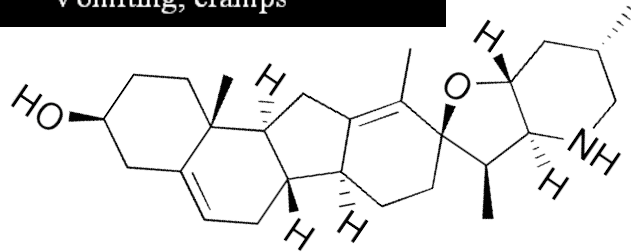
DEVELOPMENTAL BIOLOGY, Eighth Edition, Figure 6.17 (Part 1) © 2006 Sinauer Associates, Inc.

6.17 The Hedgehog signal transduction pathway (Part 2)

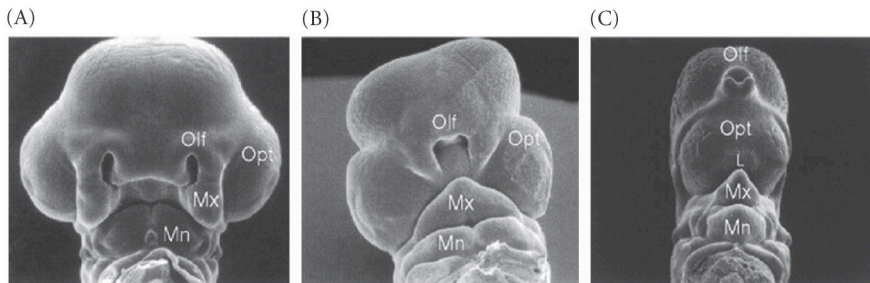


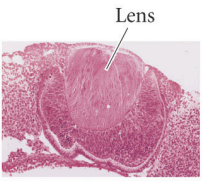
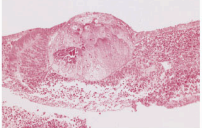
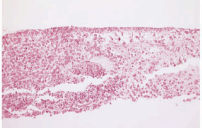
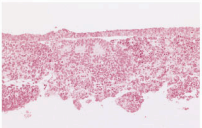
DEVELOPMENTAL BIOLOGY, Eighth Edition, Figure 6.17 (Part 2) © 2006 Sinauer Associates, Inc.

Cyclopamine

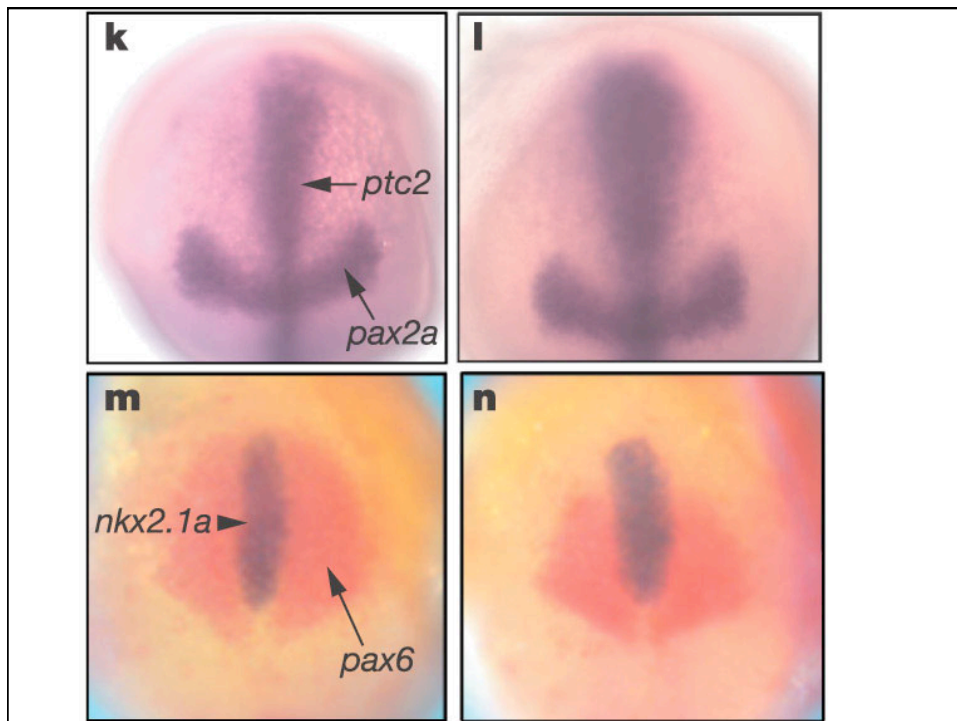


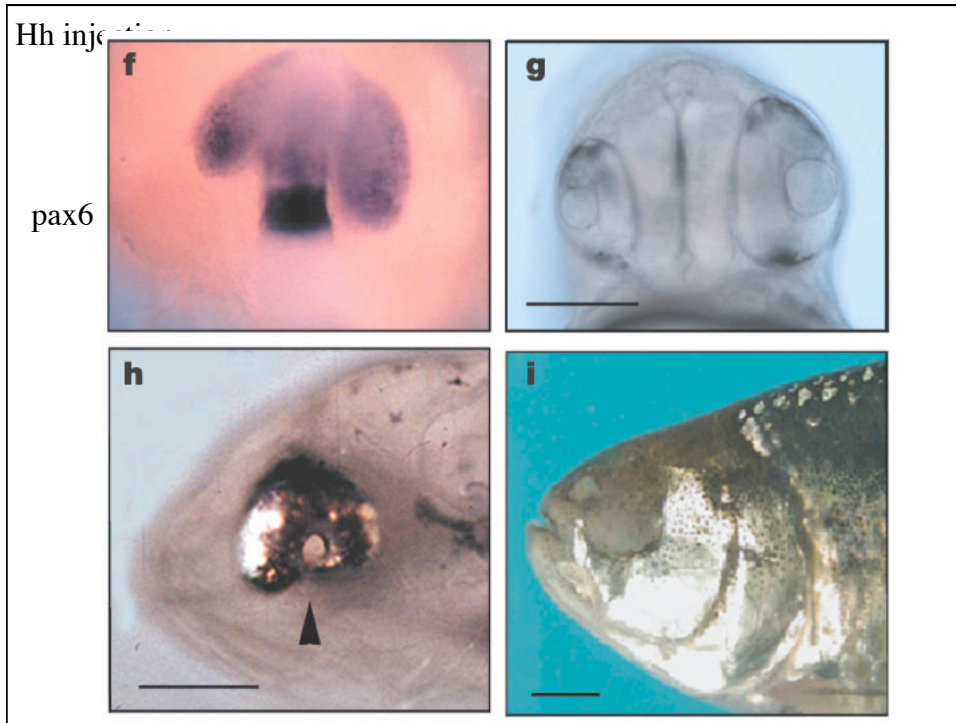
eye field into two bilateral fields (Part 1)



Optic vesicles	Surface ectoderm	Lens induction	
Wild-type	Wild-type	Yes	
<i>Pax6</i> ⁻ / <i>Pax6</i> ⁻	Wild-type	Yes	
Wild-type	<i>Pax6</i> ⁻ / <i>Pax6</i> ⁻	No	
<i>Pax6</i> ⁻ / <i>Pax6</i> ⁻	<i>Pax6</i> ⁻ / <i>Pax6</i> ⁻	No	

DEVELOPMENTAL BIOLOGY, Eighth Edition, Figure 6.3 © 2006 Sinauer Associates, Inc.





12.27 Development of the vertebrate eye (Part 2)

(C) 5-mm embryo

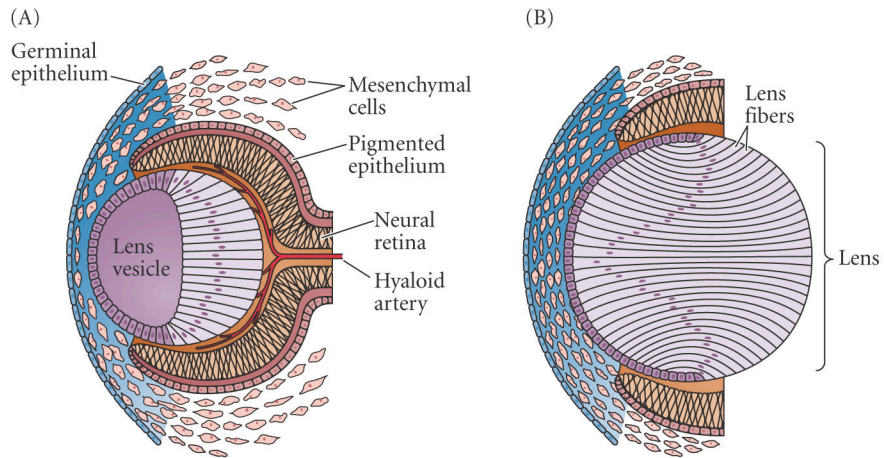


(D) 7-mm embryo



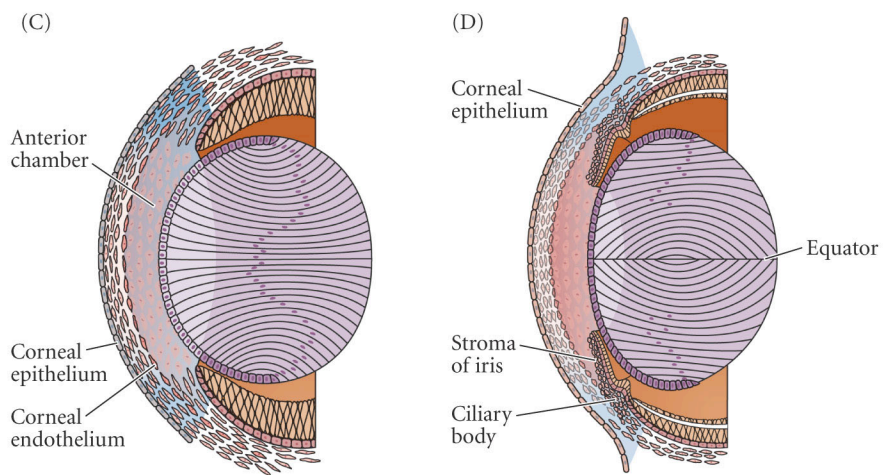
DEVELOPMENTAL BIOLOGY, Eighth Edition, Figure 12.27 (Part 2) © 2006 Sinauer Associates, Inc.

12.32 Differentiation of the lens and the anterior portion of the mouse eye (Part 1)



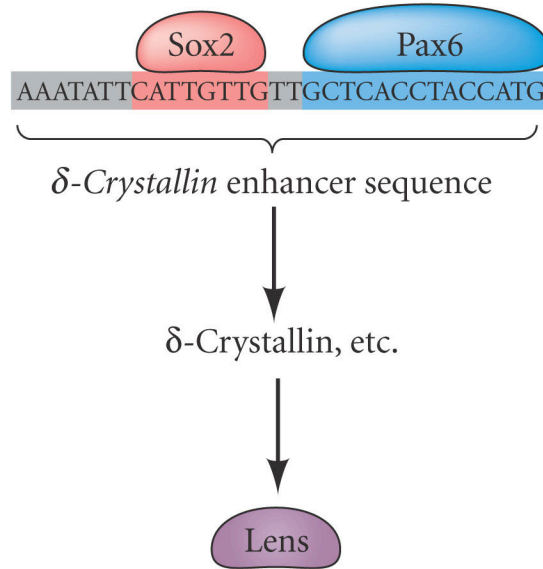
DEVELOPMENTAL BIOLOGY, Eighth Edition, Figure 12.32 (Part 1) © 2006 Sinauer Associates, Inc.

12.32 Differentiation of the lens and the anterior portion of the mouse eye (Part 2)



DEVELOPMENTAL BIOLOGY, Eighth Edition, Figure 12.32 (Part 2) © 2006 Sinauer Associates, Inc.

12.32 Differentiation of the lens and the anterior portion of the mouse eye (Part 3) (E)



DEVELOPMENTAL BIOLOGY, Eighth Edition, Figure 12.32 (Part 3) © 2006 Sinauer Associates, Inc.