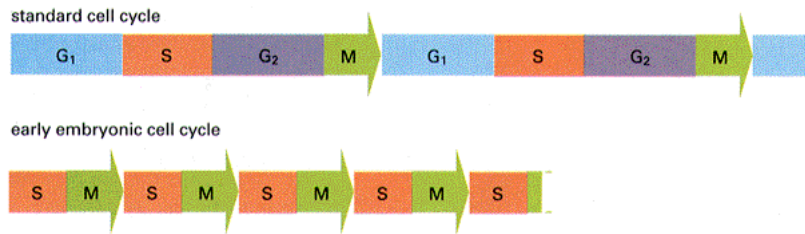
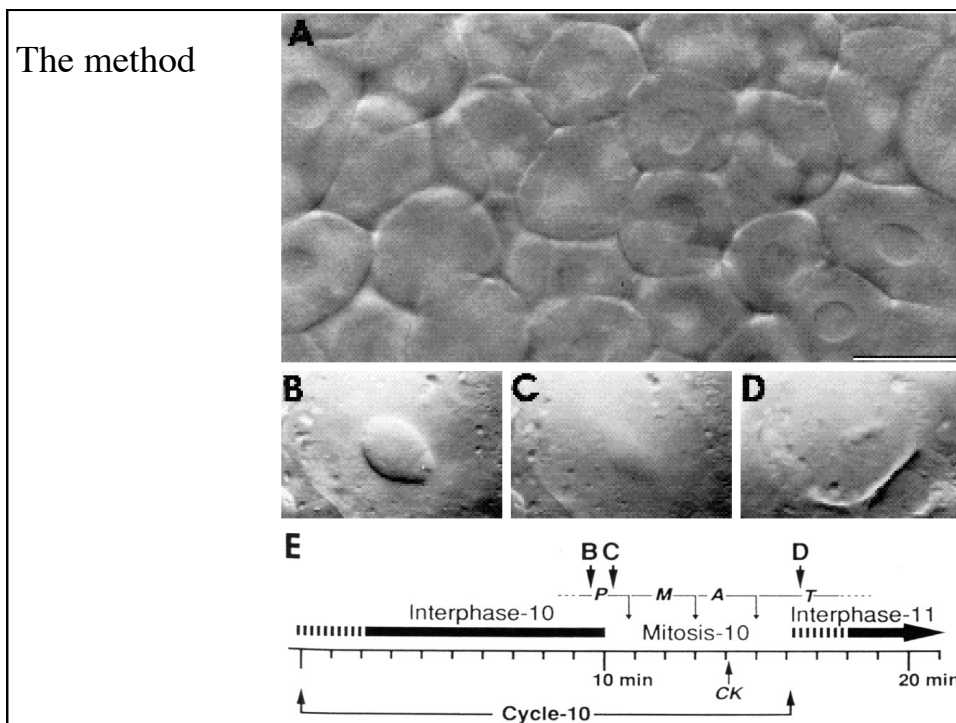
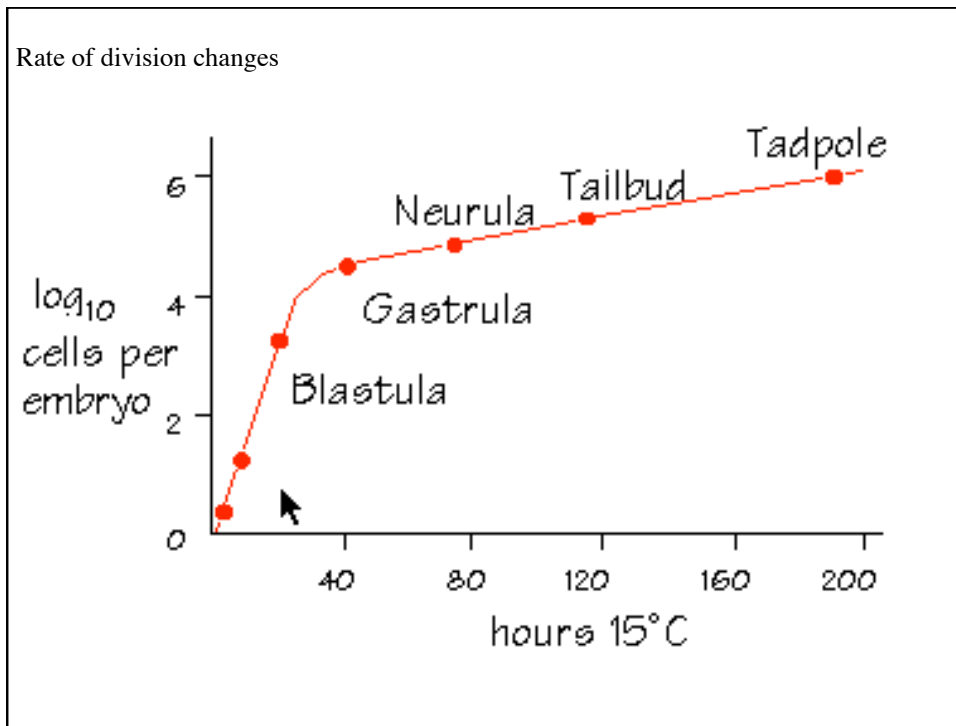
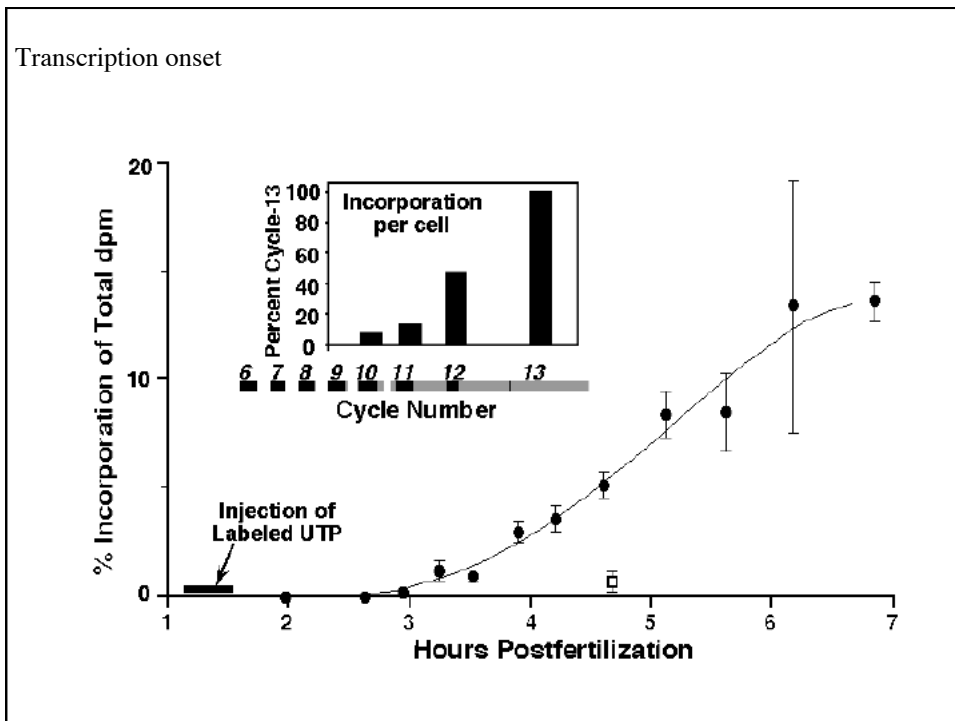
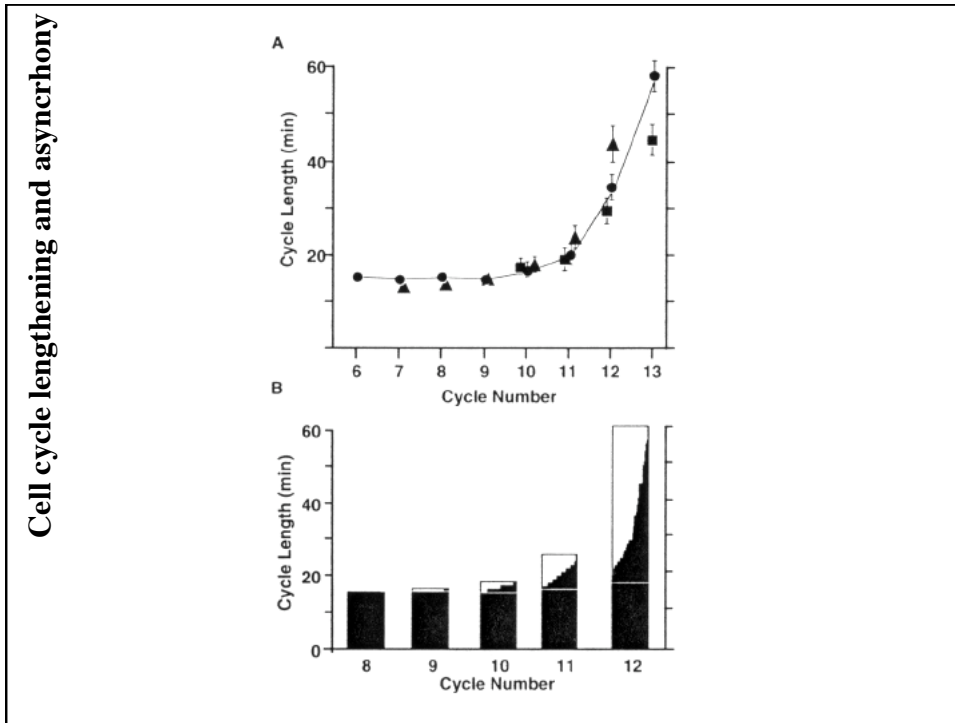


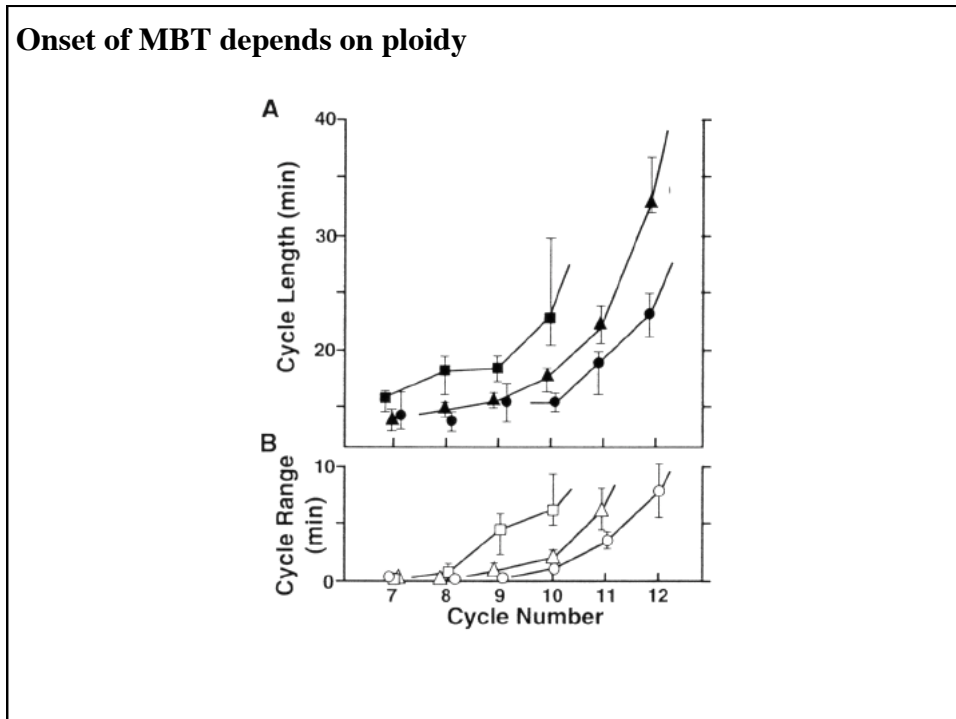
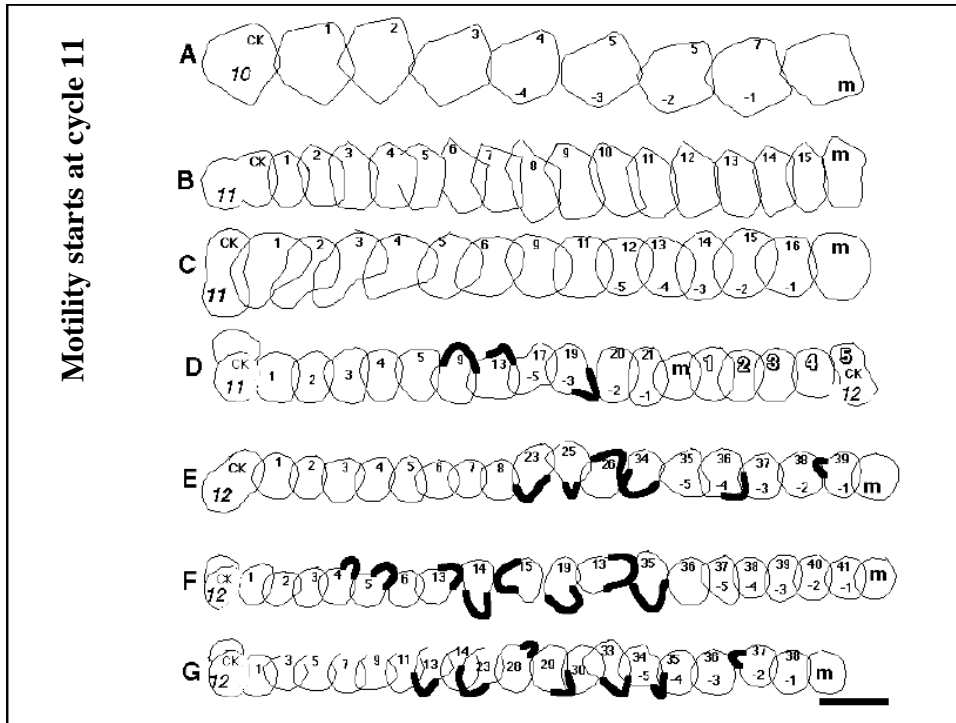
The early embryonic cell cycle is different

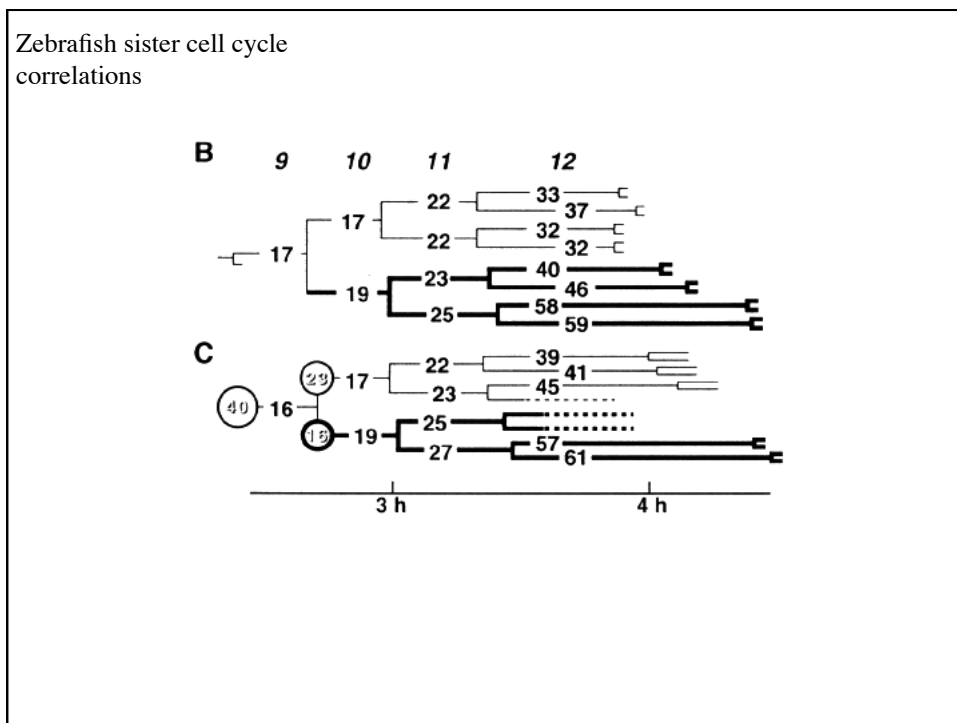
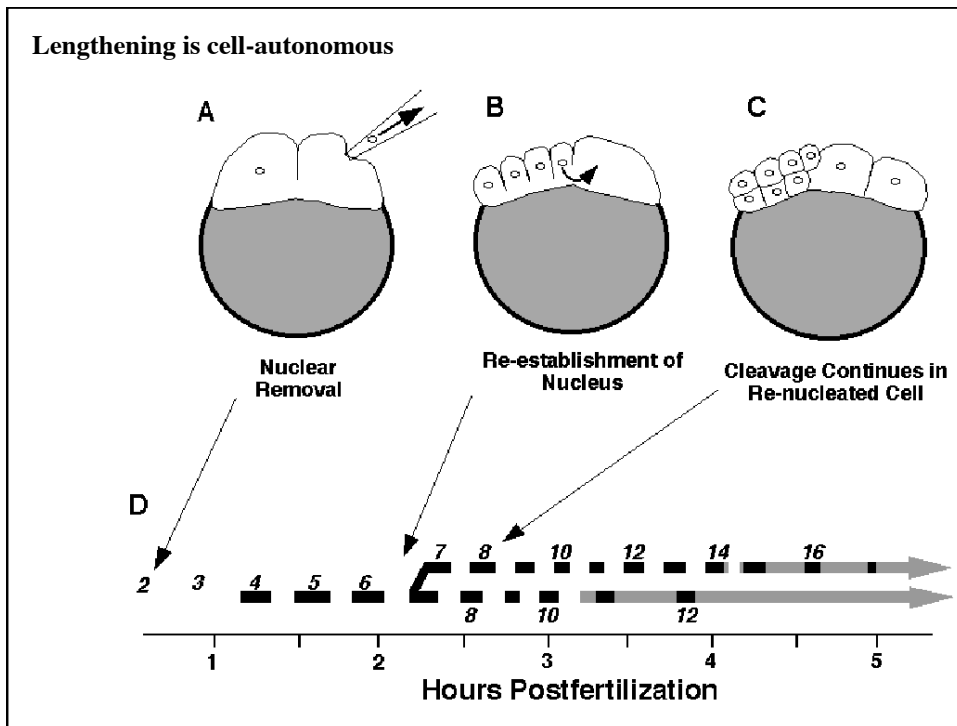


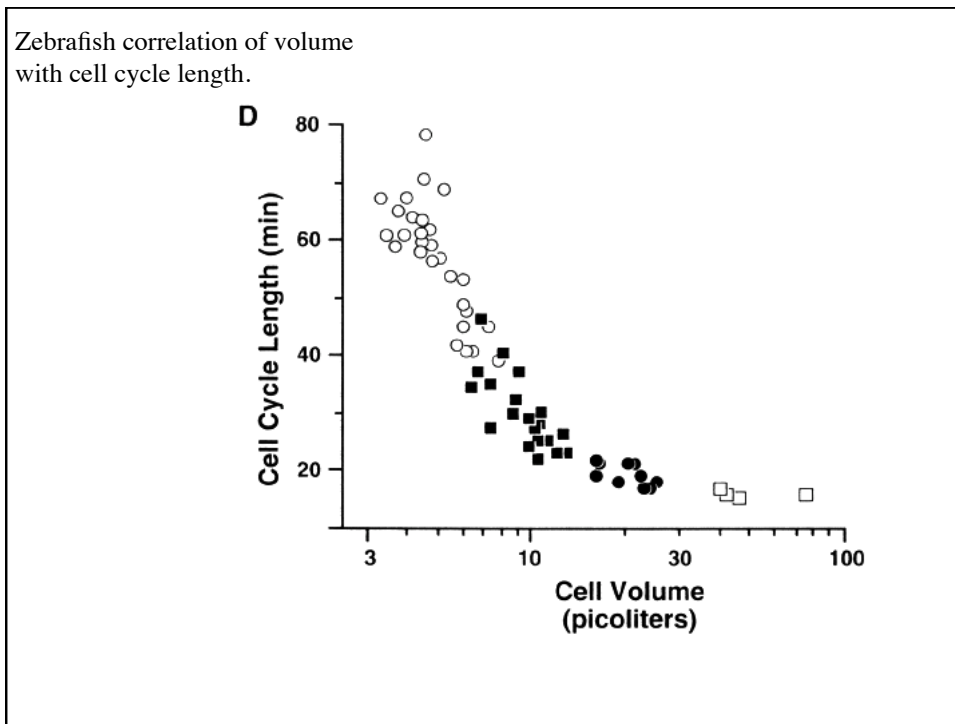
Zebrafish cleavages











c. elegans

Kane and Kimmel: The questions

Development 119, 447-456 (1993)
 Printed in Great Britain © The Company of Biologists Limited 1993

The zebrafish midblastula transition

Donald A. Kane* and Charles B. Kimmel†
 Institute of Neuroscience, University of Oregon, Eugene, Oregon 97403, USA

*Present address: Max Planck Institut für Entwicklungsbiologie, Abteilung III, Spemannstrasse 35, 7
 †Author for correspondence



Is there a midblastula transition, marked by:

- Cell cycle lengthening?
- Loss of cell synchrony?
- Activation of transcription?
- Appearance of motility?

What governs the MBT?

- Nucleocytoplasmic ratio?
- Is it cell autonomous?

MBT model

